

**67 HAIGHT STREET** SAN FRANCISCO CA 94102

**± 1,650 SQ FT OFFICE/RETAIL SPACE FOR LEASE**

**EXCLUSIVELY LISTED BY:**

**DAVIS NGUYEN**

[Davis@theDNgroupSF.com](mailto:Davis@theDNgroupSF.com)

415.412.5703 | DRE 01509978

[TheDNGroupSF.com](http://TheDNGroupSF.com)



# TABLE OF CONTENTS

03 Executive Summary

04 Floor Plan

05 Photos

07 Location Map



**Davis Nguyen**

**415.412.5703**

Davis@theDNgroupSF.com  
theDNgroupSF.com

DRE #01509978

COMPASS COMMERCIAL



## EXECUTIVE SUMMARY

### 67 HAIGHT STREET San Francisco CA 94102



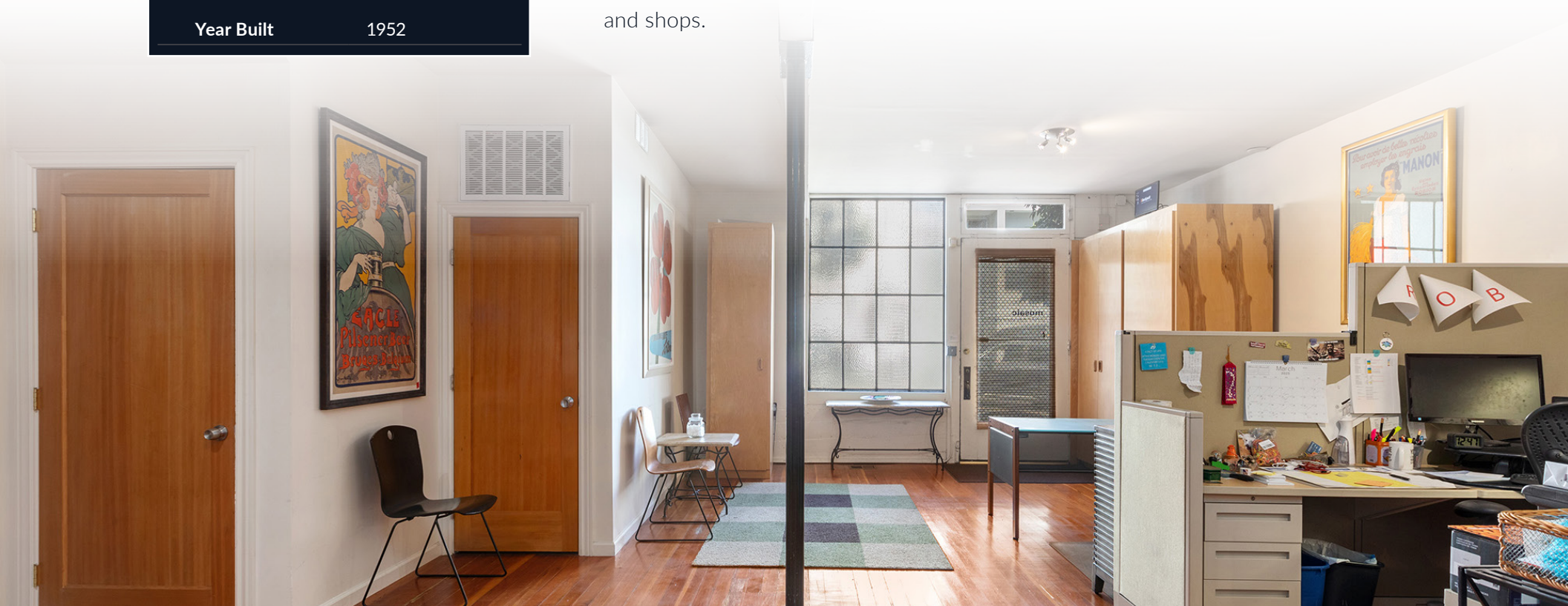
Offered at \$7,000/mo. M.G.

APN	0855-003
Unit Size	± 1,650 Sq Ft
Zoning	NCT-3
Cross Street	Octavia Street
Year Built	1952

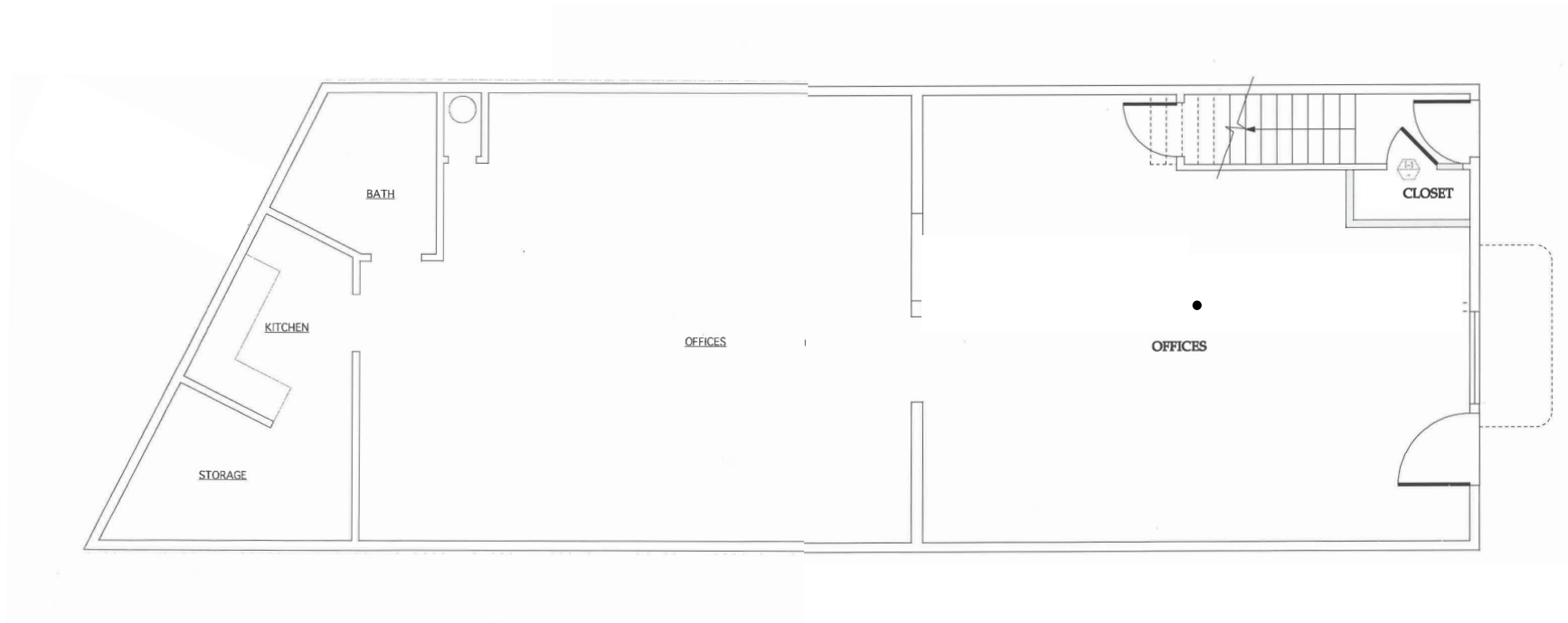
Compass Commercial is pleased to present a prime office/retail space for lease at 67 Haight Street in San Francisco.

The ground-floor commercial unit offers approximately 1,650 square feet of open space featuring soaring 16-foot ceilings, hardwood floors, a kitchen, storage area, and one private restroom. With NCT-3 zoning, the layout offers excellent flexibility for a variety of uses, along with prominent street frontage and strong visibility along Haight Street.

This is a rare opportunity to lease a renovated, character-rich space in a highly accessible location near Hayes Valley, surrounded by an abundance of popular restaurants, cafés, and shops.



# FLOOR PLAN



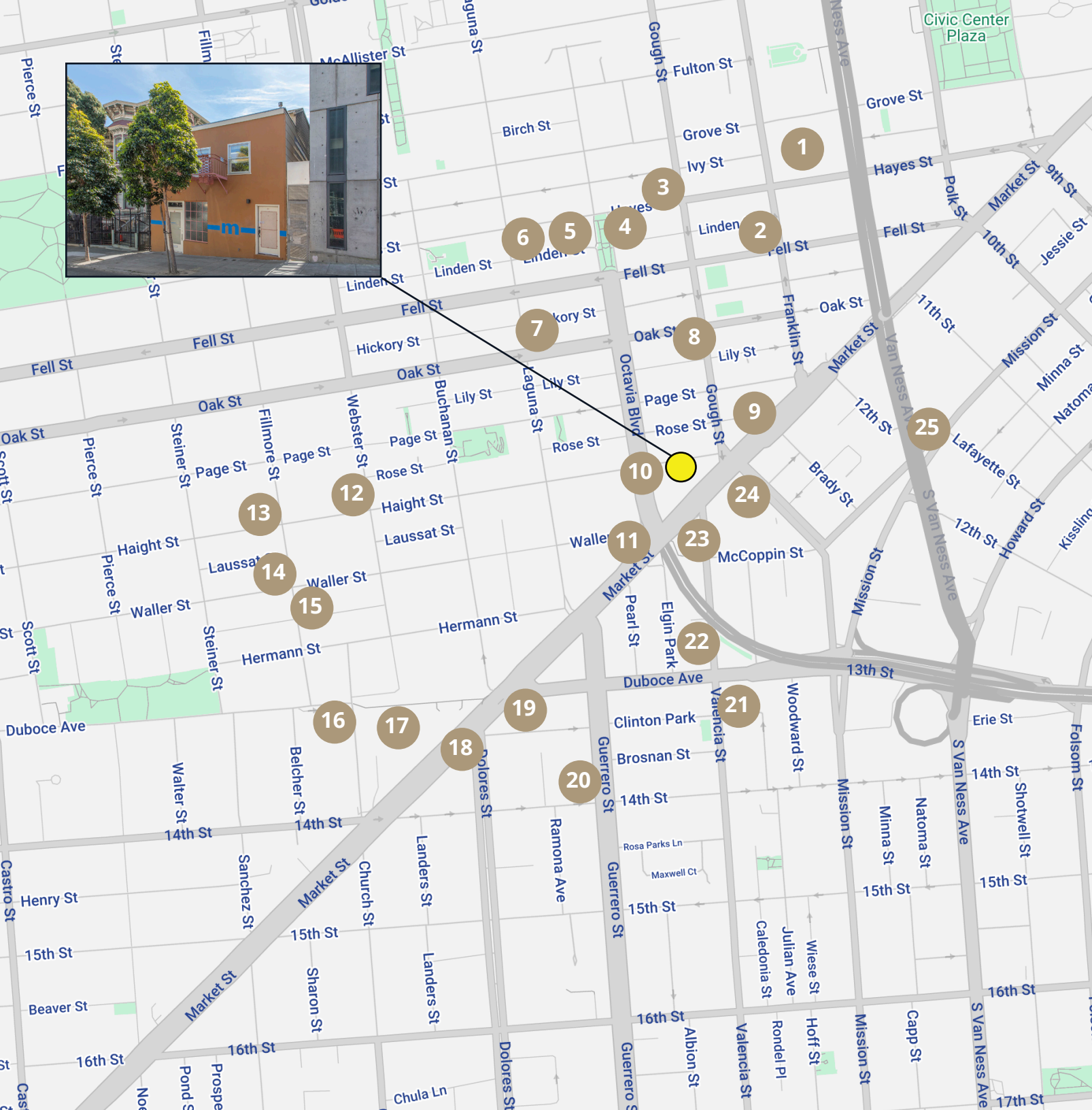












# LOCATION MAP

- 1 San Francisco Symphony
- 2 SF JAZZ
- 3 Chez Maman West
- 4 Ritual Coffee Roasters
- 5 Souvla
- 6 Topo Designs
- 7 Urban Ritual Cafe
- 8 Rich Table
- 9 Zuni Cafe
- 10 Boba Guys
- 11 SF LGBT Center
- 12 Kibatsu Japanese
- 13 Woods Lowside
- 14 Cafe du Soliel
- 15 Earthen Home Goods
- 16 CorePower Yoga
- 17 Safeway
- 18 Whole Foods
- 19 Pet Food Express
- 20 Neiman Marcus
- 21 Burma Love
- 22 Menya Kanemaru Ramen
- 23 Martuni's
- 24 Rocket Sushi
- 25 Equinox

Walk Score **99**

Transit Score **98**

Bike Score **87**

## Commute Times

Financial District **15m** by car

South San Francisco **20m** by car

Silicon Valley **45m** by car



# CONFIDENTIALITY & DISCLOSURE

## COMPASS COMMERCIAL

All materials and information received or derived from Compass Commercial - San Francisco & Los Angeles its directors, officers, agents, advisors, affiliates and/or any third party sources are provided without representation or warranty as to completeness, veracity, or accuracy, condition of the property, compliance or lack of compliance with applicable governmental requirements, developability or suitability, financial performance of the property, projected financial performance of the property for any party's intended use or any and all other matters. Neither Compass Commercial - San Francisco & Los Angeles its directors, officers, agents, advisors, or affiliates makes any representation or warranty, express or implied, as to accuracy or completeness of the any materials or information provided, derived, or received. Materials and information from any source,

whether written or verbal, that may be furnished for review are not a substitute for a party's active conduct of its own due diligence to determine these and other matters of significance to such party. Compass Commercial - San Francisco & Los Angeles will not investigate or verify any such matters or conduct due diligence for a party unless otherwise agreed in writing.

EACH PARTY SHALL CONDUCT ITS OWN INDEPENDENT INVESTIGATION AND DUE DILIGENCE.

Any party contemplating or under contract or in escrow for a transaction is urged to verify all information and to conduct their own inspections and investigations including through appropriate third party independent professionals selected by such party. All financial data should be verified by the party including by obtaining and reading applicable documents and reports and consulting appropriate independent professionals. Compass Commercial - San Francisco & Los Angeles makes no warranties and/or representations regarding the veracity, completeness, or relevance of any financial data or assumptions. Compass Commercial - San Francisco & Los Angeles does not serve as a financial advisor to any party regarding any proposed transaction. All data and assumptions regarding financial performance, including that used for financial modeling purposes, may differ from actual data or performance. Any estimates of market rents and/or projected rents that may be provided to a party do not necessarily mean that rents can be established at or increased to that level. Parties must evaluate any applicable contractual and governmental limitations as well as market conditions, vacancy factors and other issues in order to determine rents from or for the property.

Legal questions should be discussed by the party with an attorney. Tax questions should be discussed by the party with a certified public accountant or tax attorney. Title questions should be discussed by the party with a title officer or attorney. Questions regarding the condition of the property and whether the property complies with applicable governmental requirements should be discussed by the party with appropriate engineers, architects, contractors, other consultants and governmental agencies. All properties and services are marketed by Compass Commercial - San Francisco & Los Angeles in compliance with all applicable fair housing and equal opportunity laws.



**Davis Nguyen**

415.412.5703

Davis@theDNgroupSF.com

theDNgroupSF.com

DRE #01509978

