



2140 CLEMENT STREET SAN FRANCISCO CA 94121

± 7,000 SQ FT RESTAURANT BUILDING FOR LEASE

EXCLUSIVELY LISTED BY:

DAVIS NGUYEN

Davis@theDNgroupSF.com

415.412.5703

DRE 01509978

EXECUTIVE SUMMARY

2140 CLEMENT STREET San Francisco CA 94121



Please Call For Pricing

APN 1411-013

Building Size ± 7,000 Sq Ft

Zoning NCD

Cross Street 23rd Avenue

Year Built 1922

Compass Commercial is pleased to present the opportunity to lease the restaurant building at 2140 Clement Street, located on a prominent corner in San Francisco's Central Richmond District.

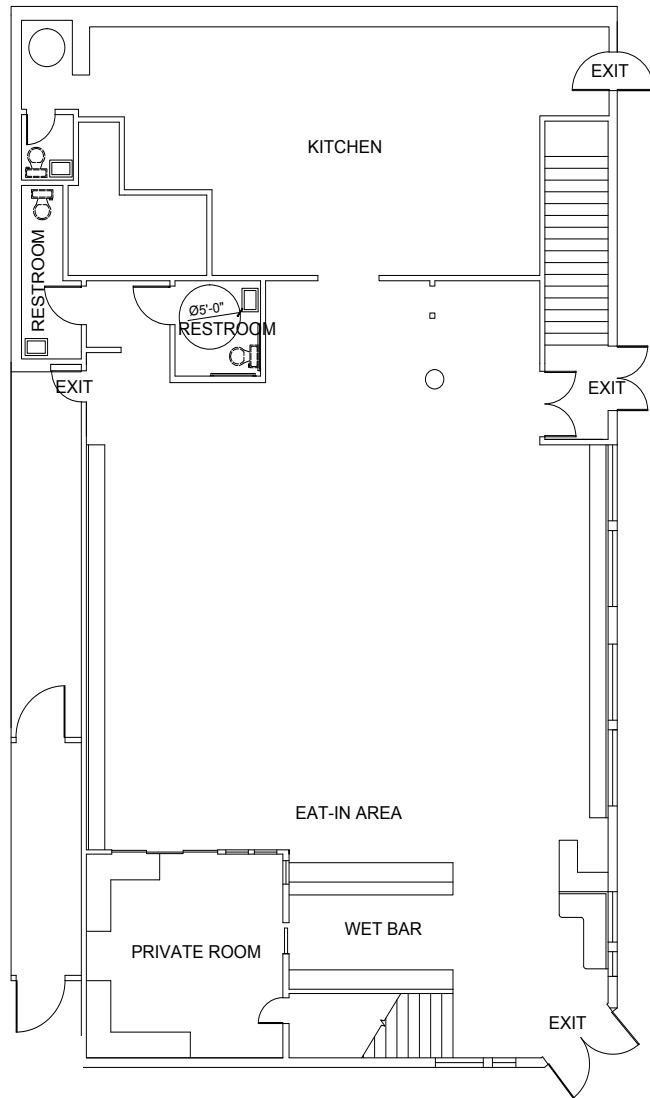
This ±7,000 square foot, two-story building features approximately 82 feet of frontage along Clement Street, offering strong visibility and presence in a well-trafficked neighborhood corridor. The property includes a Type 1 hood and full kitchen infrastructure, providing a turnkey foundation for restaurant operators.

The interior layout allows for a variety of configurations across both floors, and large storefront windows offer abundant natural light throughout. With its corner positioning, the building benefits from consistent pedestrian and vehicle traffic.

Surrounded by a mix of popular restaurants, cafes, and local businesses, and supported by a dense residential population, 2140 Clement Street is a great opportunity for businesses looking to establish themselves at a prime location in a well-established community.



GROUND FLOOR PLAN

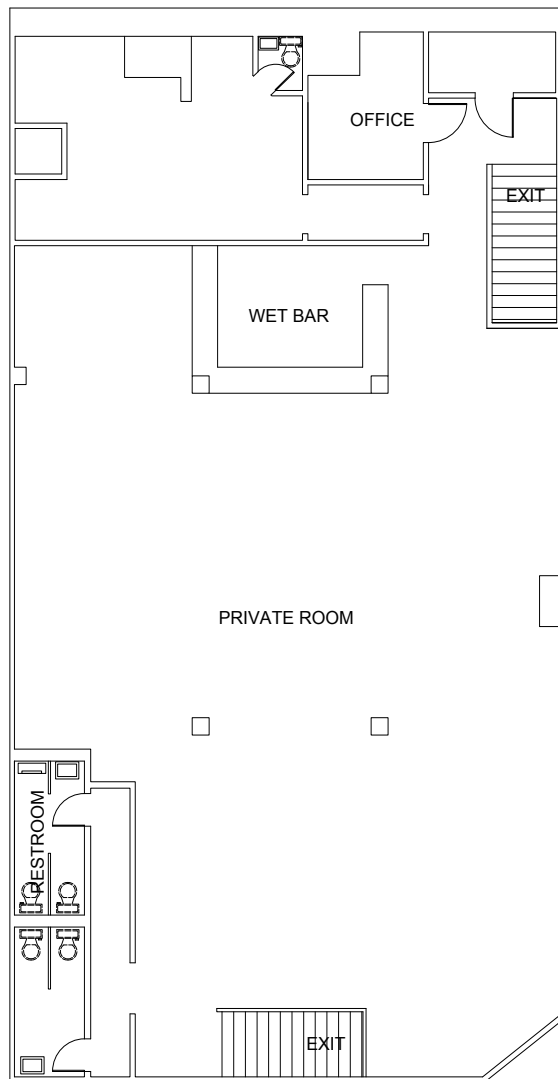


23RD AVE

CLEMENT ST



SECOND FLOOR PLAN



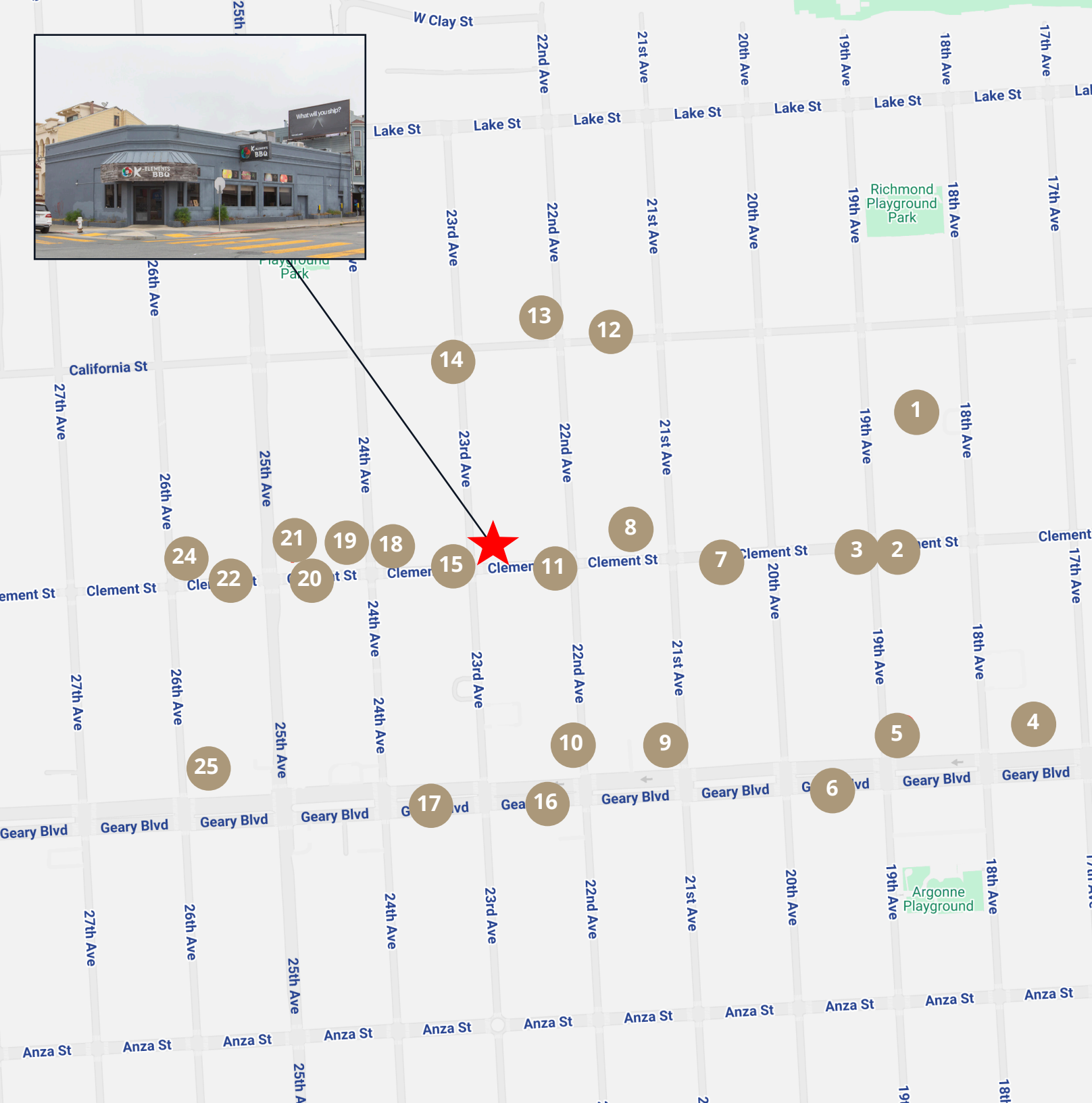
23RD AVE

CLEMENT ST



LOCATION MAP

1. Richmond Recreation Center
2. Tia Margarita
3. Lokma
4. Hong Kong Lounge
5. Volcano Curry
6. Richmond Produce Market
7. Clement Nursery
8. Home Coffee Roasters
9. Dragon Beaux
10. Aziza
11. Big Fish House
12. Bazaar Cafe
13. Angelina's Deli Cafe
14. Pizzetta 211
15. Thanh Thanh Café
16. PPQ Dungeness Island
17. Tommy's Mexican
18. Gordo Taqueria
19. Ilana Coffee
20. Fiorella Clement
21. AK Meats
22. Let's Roll Ice Creamery
23. Shoshin Sushi
24. Trad'r Sam









CONFIDENTIALITY & DISCLOSURE

COMPASS COMMERCIAL

All materials and information received or derived from Compass Commercial - San Francisco & Los Angeles its directors, officers, agents, advisors, affiliates and/or any third party sources are provided without representation or warranty as to completeness, veracity, or accuracy, condition of the property, compliance or lack of compliance with applicable governmental requirements, developability or suitability, financial performance of the property, projected financial performance of the property for any party's intended use or any and all other matters. Neither Compass Commercial - San Francisco & Los Angeles its directors, officers, agents, advisors, or affiliates makes any representation or warranty, express or implied, as to accuracy or completeness of the any materials or information provided, derived, or received. Materials and information from any source,

whether written or verbal, that may be furnished for review are not a substitute for a party's active conduct of its own due diligence to determine these and other matters of significance to such party. Compass Commercial - San Francisco & Los Angeles will not investigate or verify any such matters or conduct due diligence for a party unless otherwise agreed in writing.

EACH PARTY SHALL CONDUCT ITS OWN INDEPENDENT INVESTIGATION AND DUE DILIGENCE.

Any party contemplating or under contract or in escrow for a transaction is urged to verify all information and to conduct their own inspections and investigations including through appropriate third party independent professionals selected by such party. All financial data should be verified by the party including by obtaining and reading applicable documents and reports and consulting appropriate independent professionals. Compass Commercial - San Francisco & Los Angeles makes no warranties and/or representations regarding the veracity, completeness, or relevance of any financial data or assumptions. Compass Commercial - San Francisco & Los Angeles does not serve as a financial advisor to any party regarding any proposed transaction. All data and assumptions regarding financial performance, including that used for financial modeling purposes, may differ from actual data or performance. Any estimates of market rents and/or projected rents that may be provided to a party do not necessarily mean that rents can be established at or increased to that level. Parties must evaluate any applicable contractual and governmental limitations as well as market conditions, vacancy factors and other issues in order to determine rents from or for the property.

Legal questions should be discussed by the party with an attorney. Tax questions should be discussed by the party with a certified public accountant or tax attorney. Title questions should be discussed by the party with a title officer or attorney. Questions regarding the condition of the property and whether the property complies with applicable governmental requirements should be discussed by the party with appropriate engineers, architects, contractors, other consultants and governmental agencies. All properties and services are marketed by Compass Commercial - San Francisco & Los Angeles in compliance with all applicable fair housing and equal opportunity laws.



Davis Nguyen

415.319.8166

Davis@theDNgroupSF.com

theDNgroupSF.com

DRE #01509978

