

**1427 HAIGHT STREET**  
**SAN FRANCISCO CA 94117**

**PRIME RETAIL SPACE AVAILABLE ON ICONIC HAIGHT STREET**



**MATT HEALY** Matt@HealySF.com | 415.497.0259 | DRE 02027148

**DAVIS NGUYEN** Davis@theDNgroupSF.com | 415.412.5703 | DRE 01509978

**COMPASS**  
**COMMERCIAL**

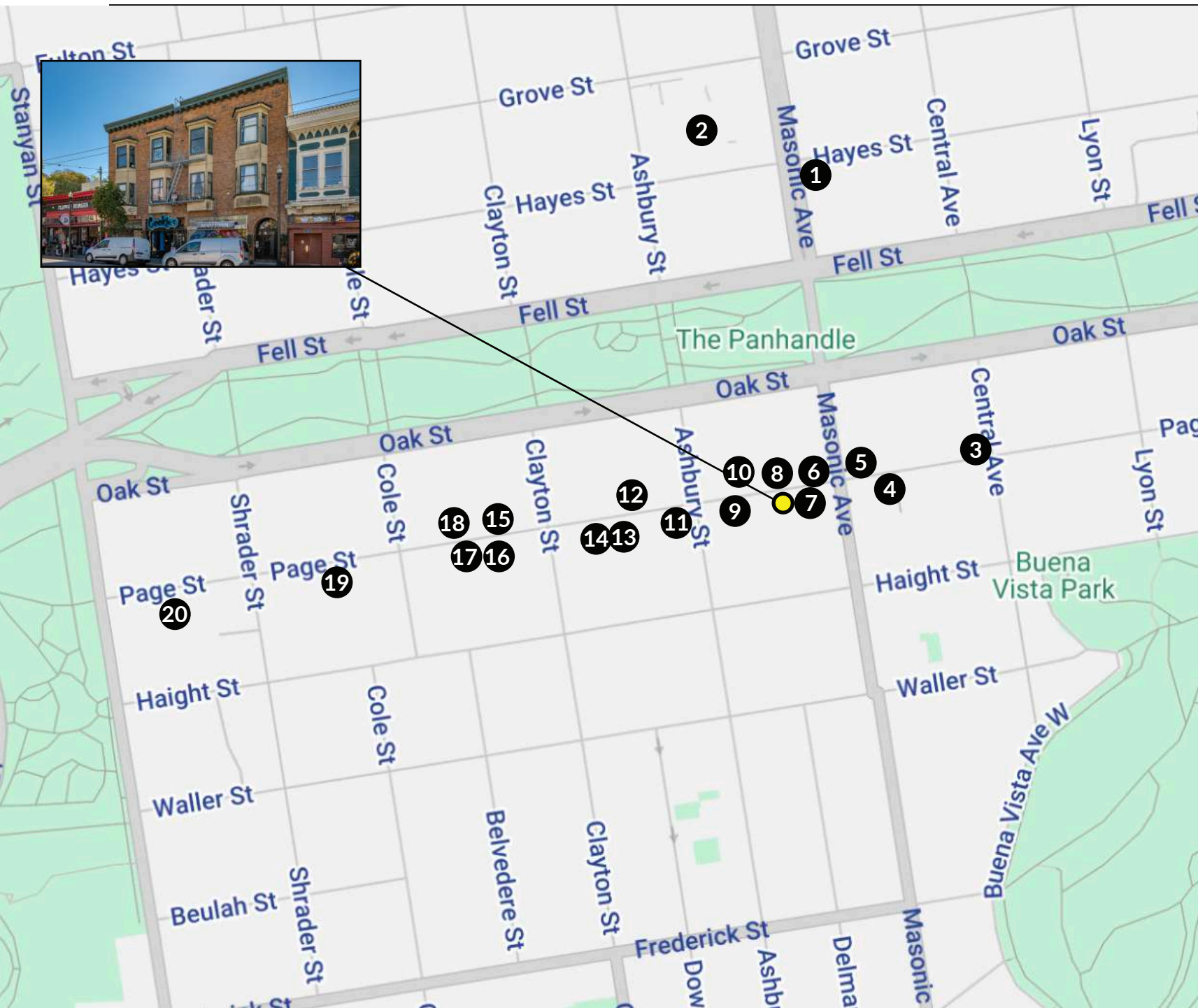
# 1427 HAIGHT STREET

Welcome to 1427 Haight Street, offering approximately 1,100 square feet of premium retail space located in the heart of San Francisco's vibrant Haight-Ashbury neighborhood. This space features an open floor plan with high ceilings and a convenient storage area, providing flexibility for a variety of business types.

[illegible]



# LOCATION MAP



## LOCATION MAP

- 1) Fish in the Box
- 2) John Adams Campus, CCSF
- 3) Ritual Coffee Roasters
- 4) Twisted Thistle Apothecary
- 5) Magnolia Brewing
- 6) Love on Haight
- 7) True
- 8) Nice Kicks
- 9) Relic Vintage
- 10) Piedmont Boutique
- 11) Aviator Nation
- 12) Gus's Market
- 13) Held Over
- 14) Buffalo Exchange
- 15) FTC Skateboarding
- 16) Dr. Martens
- 17) Indigo Vintage Cooperative
- 18) Wasteland
- 19) Booksmith
- 20) Ameoba Music



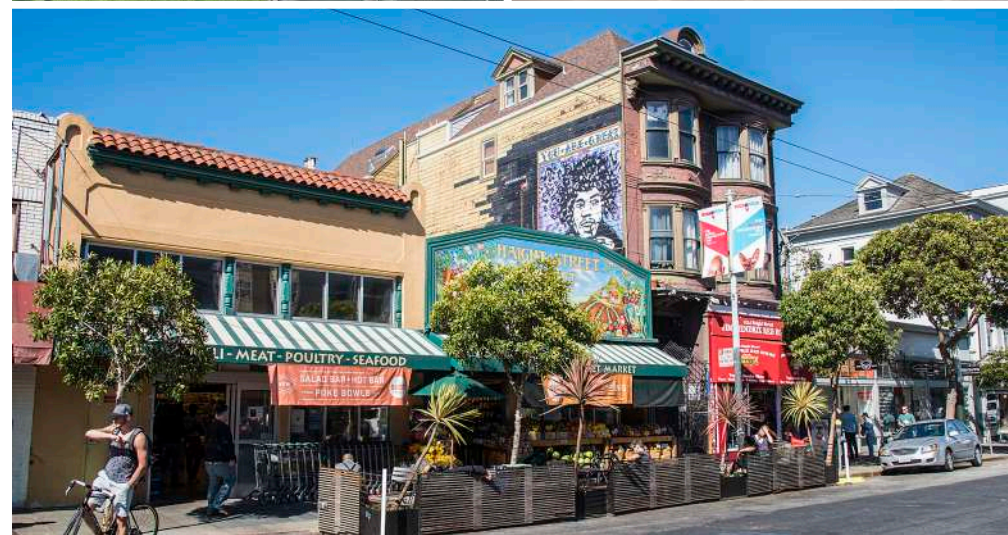
# ABOUT THE NEIGHBORHOOD

---

## WELCOME TO THE HAIGHT ASHBURY DISTRICT

Haight Ashbury is a historic neighborhood located in the heart of San Francisco, California. Known for its vibrant culture and bohemian spirit, Haight Ashbury has long been a center of counterculture in the Bay Area. The neighborhood is bordered by Golden Gate Park to the north, Duboce Triangle to the east, the Lower Haight to the south, and the Inner Sunset to the west. The main commercial thoroughfare, Haight Street, runs through the center of the neighborhood and is lined with a variety of shops, restaurants, and bars.

Haight Ashbury is also a popular tourist destination. Visitors can explore the neighborhood's colorful Victorian-era architecture, browse the eclectic boutiques and vintage stores along Haight Street, and sample the diverse cuisine at the neighborhood's many restaurants. Overall, Haight Ashbury is a vibrant and dynamic neighborhood with a rich history and unique character that continues to attract residents and visitors alike.



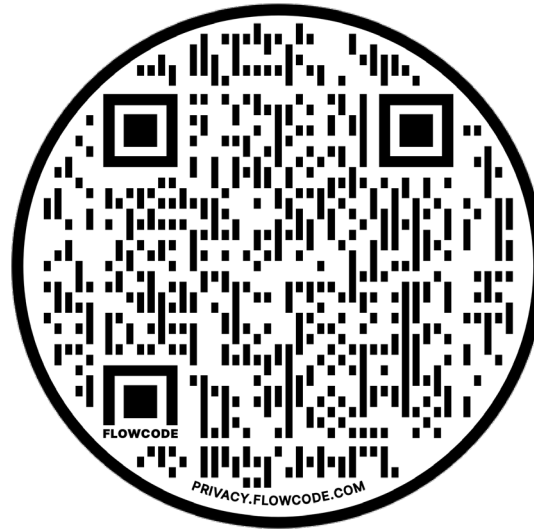








# COMPASS COMMERCIAL



Scan the QR code for more information about  
1427 Haight Street

## MATT HEALY

Matt@HealySF.com

415.497.0259

DRE 02027148

## DAVIS NGUYEN

Davis@theDNgroupSF.com

415.412.5703

DRE 01509978

## CONFIDENTIALITY & DISCLOSURE

Compass is a real estate broker licensed by the State of California and abides by Equal Housing Opportunity laws. License Number 01991628, 01527235, 1527365. All material presented herein is intended for informational purposes only and is compiled from sources deemed reliable but has not been verified. Changes in price, condition, sale or withdrawal may be made without notice. No statement is made as to the accuracy of any description. All measurements and square footage are approximate.