

1584 WALLACE AVENUE
SAN FRANCISCO CA 94124

± 1,766 SQ FT INDUSTRIAL SPACE FOR LEASE



THE  GROUP

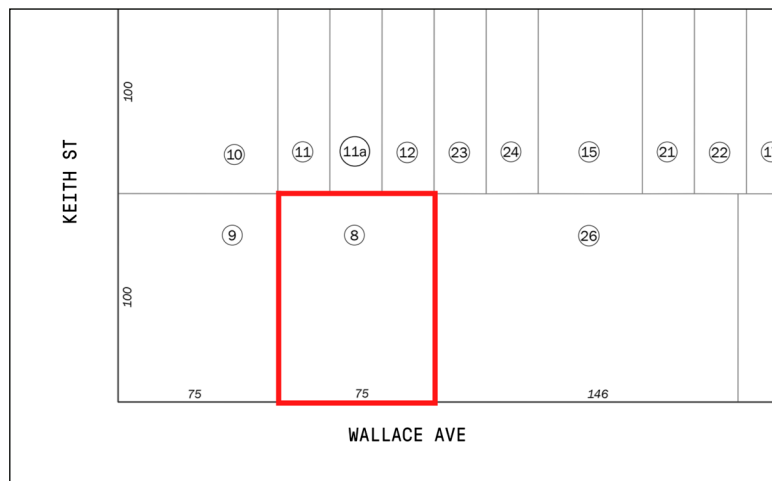
PROPERTY DESCRIPTION

1584 WALLACE AVENUE

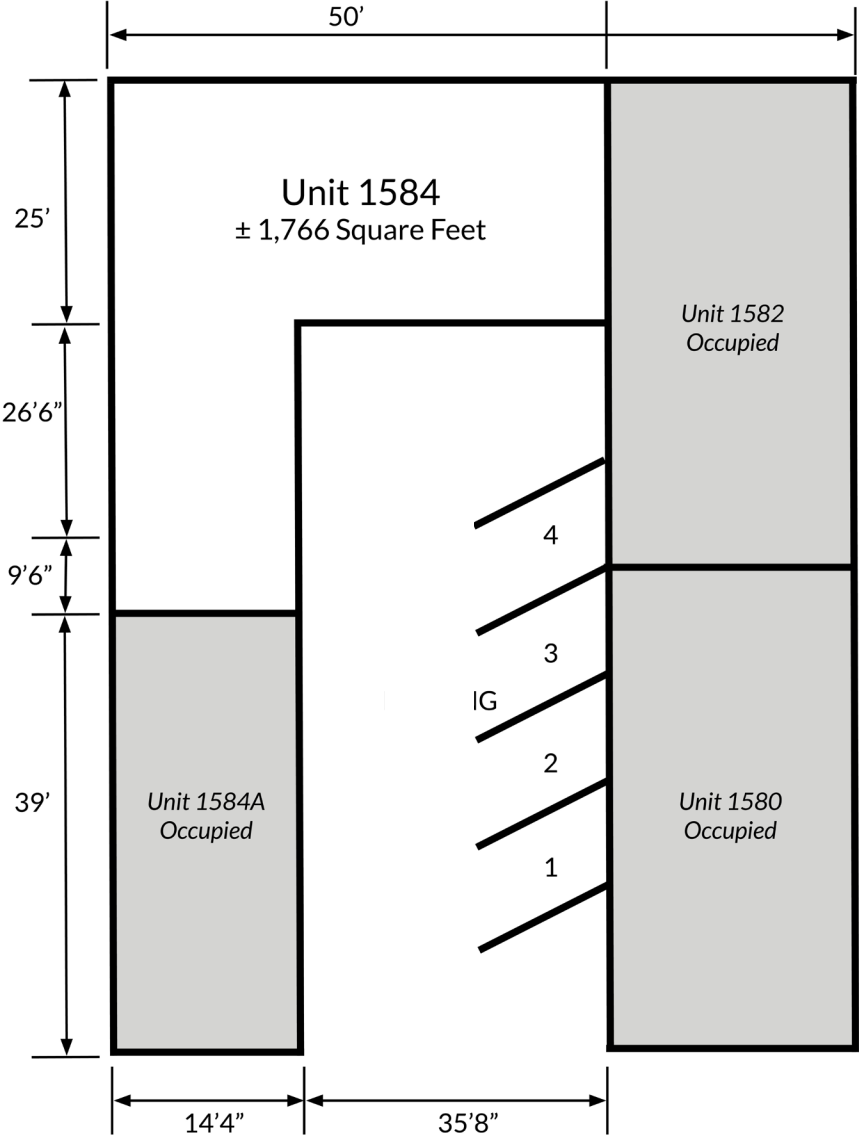
Unit Size	± 1,766 Sq Ft
APN	4829-008
Zoning	PDR-1-B
Year Built	1975
Asking Rent	Negotiable

Compass Commercial, as exclusive advisors, is pleased to present this rare opportunity to lease a newly renovated industrial space located at 1584 Wallace Avenue, in the Bayview District of San Francisco. 1584 Wallace Avenue consists of ±1,766 square feet of warehouse space with a 10 foot roll up door, and includes two dedicated parking spaces in a gated and secured lot.

- ± 1,766 Square Feet
- Newly Renovated Space
- Two Dedicated Parking Spaces in Secure Gated Lot
- 10' Roll Up Door
- Zoning - PDR-1-B

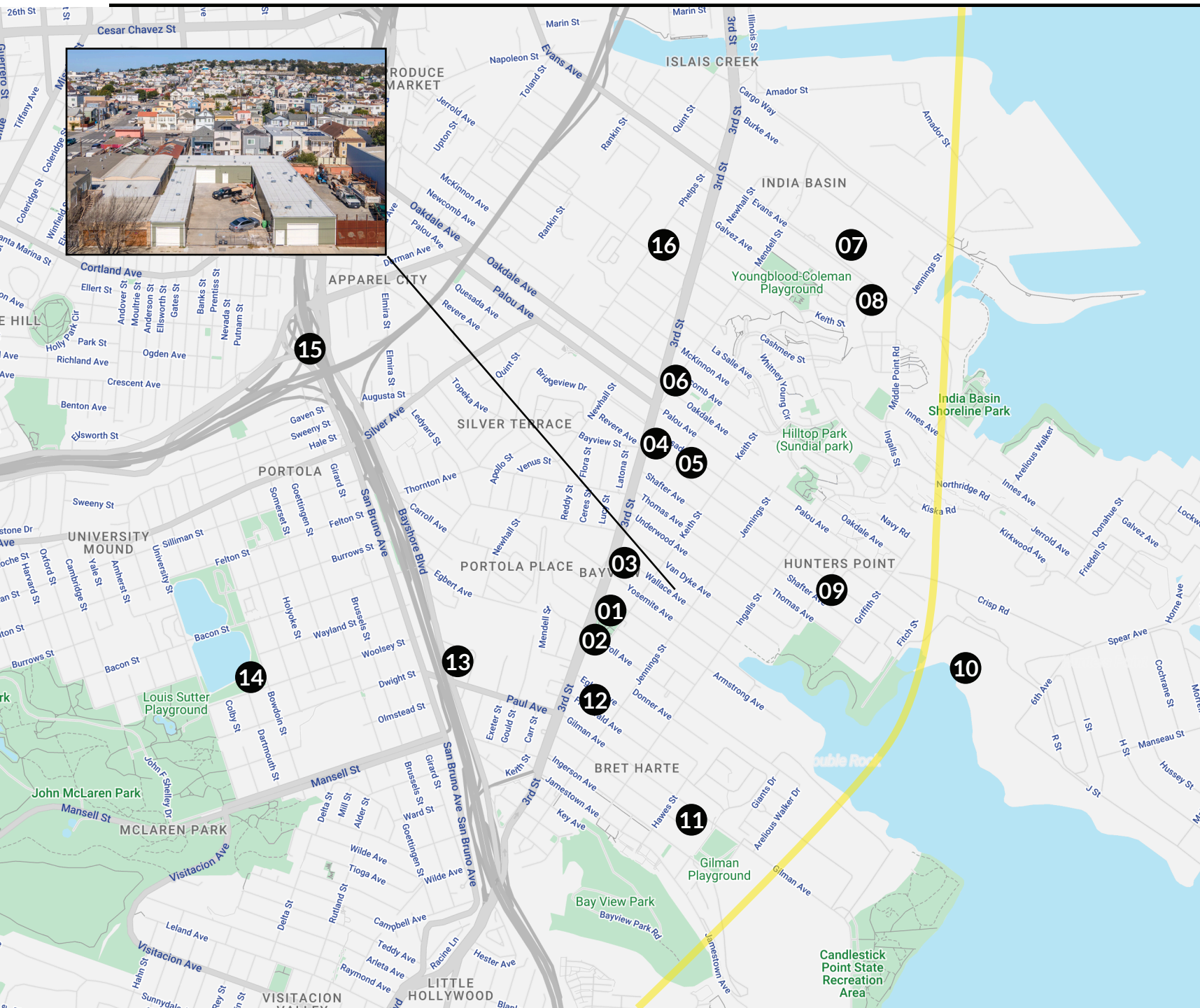


FLOOR PLAN



WALLACE AVENUE

LOCATION MAP



LOCATION MAP

- 1) Bayview KC Jones Playground
- 2) Martin Luther King Jr Pool
- 3) McDonald's
- 4) Bayview Public Library
- 5) Bayview Hunter's Point YMCA
- 6) Bayview Opera House
- 7) USPS
- 8) Speakeasy Ales & Lagers
- 9) SF Honey & Pollen Company
- 10) Hunter's Point
- 11) Bret Harte Elementary School
- 12) Laughing Monk Brewing
- 13) U-Haul
- 14) SF Water Department
- 15) Hwy 101 & 280 Access
- 16) Flora Grubb Gardens

Nearby MUNI

T - Third Street

54 Felton

29 Sunset



SFMTA

1584 WALLACE AVENUE PHOTOS



1584 WALLACE AVENUE PHOTOS



COMPASS COMMERCIAL



Visit TheDNgroupSF.com
or scan the QR code for more information.

DAVIS NGUYEN

Davis@theDNgroupSF.com

415.412.5703

DRE 01509978

CONFIDENTIALITY & DISCLOSURE

Compass is a real estate broker licensed by the State of California and abides by Equal Housing Opportunity laws. License Number 01991628, 01527235, 1527365. All material presented herein is intended for informational purposes only and is compiled from sources deemed reliable but has not been verified. Changes in price, condition, sale or withdrawal may be made without notice. No statement is made as to the accuracy of any description. All measurements and square footage are approximate.