

652-660 KEARNY STREET

SAN FRANCISCO CA 94108

RETAIL/OFFICE FULL BUILDING OPPORTUNITY | DIVISIBLE



COMPASS COMMERCIAL

# PROPERTY OVERVIEW

## 652-660 KEARNY STREET

San Francisco CA 94108

---

<b>Lease Rate</b>	\$43 PSF NNN
<b>Building SqFt</b>	±2,784
<b>Lot SqFt</b>	±1,833
<b>Floors</b>	Two Floors + Lower Level
<b>Zoning</b>	CCB - Chinatown Community Business

---

## BUILDING ATTRIBUTES

- Full Building Opportunity | Divisible
- ± 1,557 Ground Floor Retail Space
- ± 1,227 Second Floor Office Space
- High Visibility Corner Location
- Financial District/Chinatown Neighborhood
- New Chinatown-Rose Park Subway Station Nearby



# PROPERTY DESCRIPTION

---

652-660 Kearny Street is a two-story mixed-use retail and office building located in the heart of the Financial District in San Francisco. This  $\pm 2,784$  square foot space has a ground-floor retail space, a second-floor office space, plus a lower level. This building is located on the corner of Kearny Street and Clay Street, which is an ideal location for businesses looking to establish a strong presence in the city.

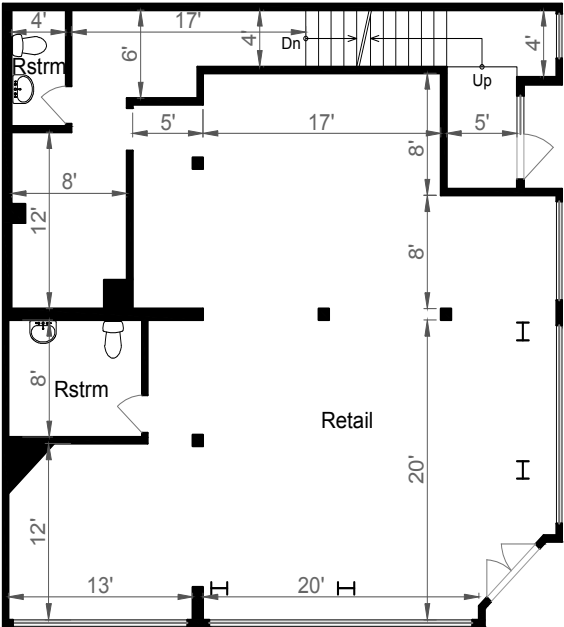
The ground floor of the building features a spacious  $\pm 1,557$  square foot retail space with a corner entrance, perfect for a storefront, showroom or boutique. The large windows provide ample natural light and high visibility on a very busy intersection with heavy foot and vehicle traffic.

The second floor of the building offers a bright and airy  $\pm 1,227$  square foot office space that has a private entrance on Kearny Street. With a mix of different sized private offices, large windows, and high ceilings, this space is ideal for any business looking for a well-located, professional workspace.

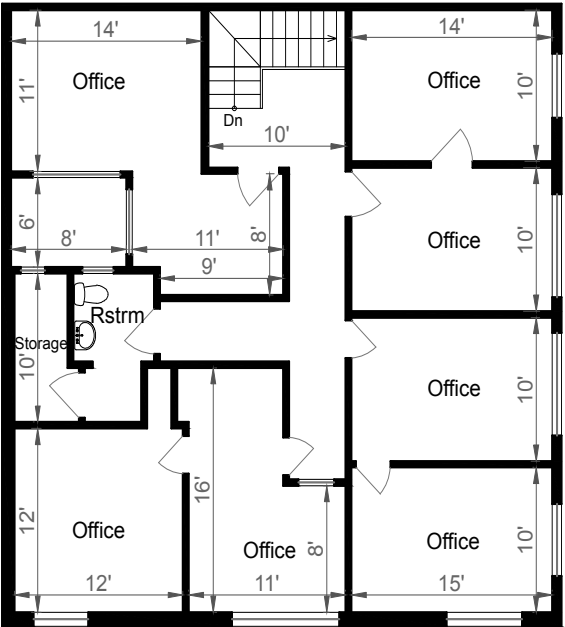
In addition to its prime location, this building offers easy access to public transportation, including the new Chinatown-Rose Pak Subway Station, making it an easily accessible destination for employees and clients alike. The building is also surrounded by a vibrant community of restaurants, cafes, and shops. 652-660 Kearny Street is a highly desirable mixed-use building that offers full-building identity in a prominent location.



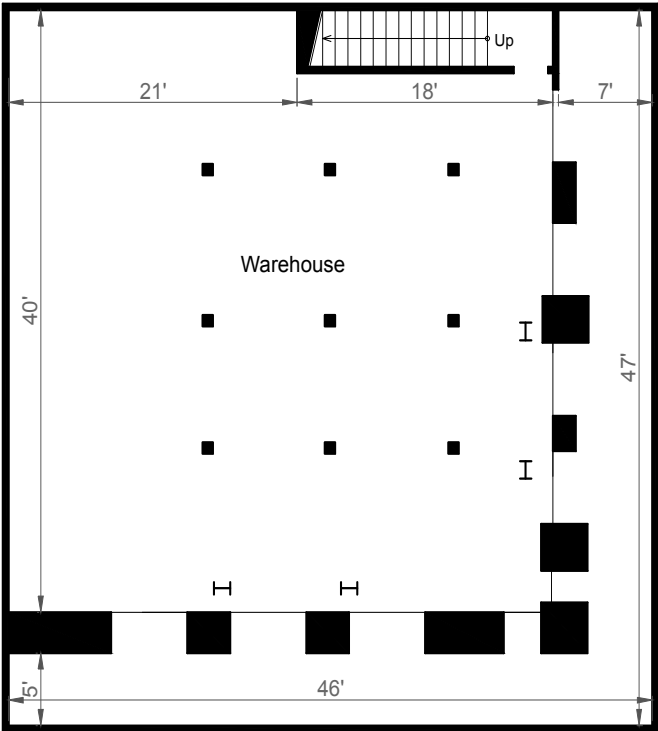
# FLOOR PLAN



FIRST FLOOR



SECOND FLOOR



LOWER LEVEL

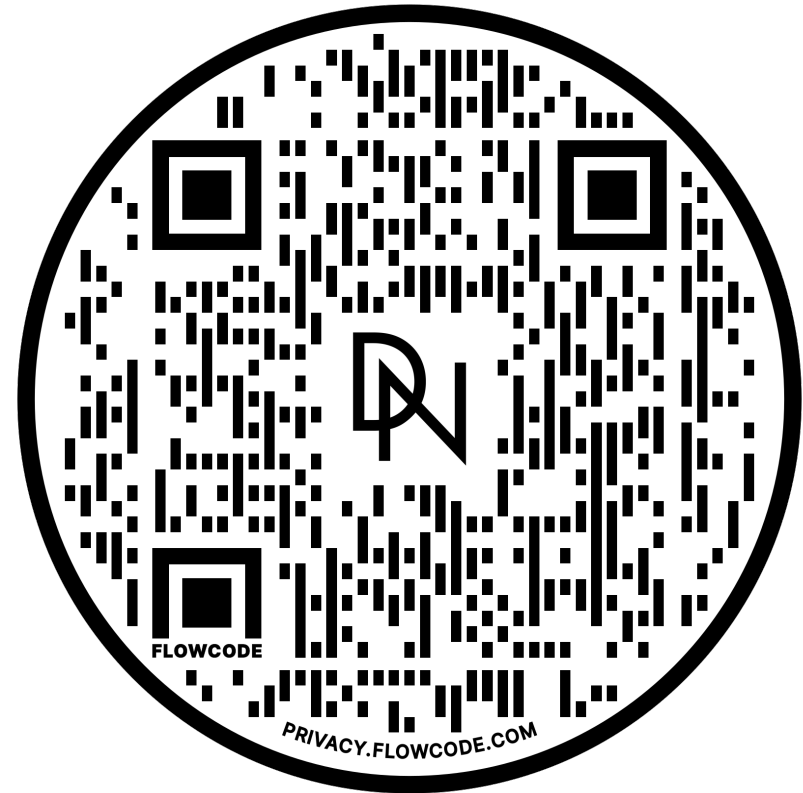




# PROPERTY WEBSITE

---

Visit [www.652Kearnyst.com](http://www.652Kearnyst.com)  
or scan the QR code for more  
information.



# COMPASS COMMERCIAL

## CONFIDENTIALITY & DISCLOSURE

All materials and information received or derived from Compass Commercial - San Francisco & Los Angeles its directors, officers, agents, advisors, affiliates and/or any third party sources are provided without representation or warranty as to completeness, veracity, or accuracy, condition of the property, compliance or lack of compliance with applicable governmental requirements, developability or suitability, financial performance of the property, projected financial performance of the property for any party's intended use or any and all other matters. Neither Compass Commercial - San Francisco & Los Angeles its directors, officers, agents, advisors, or affiliates makes any representation or warranty, express or implied, as to accuracy or completeness of the any materials or information provided, derived, or received. Materials and information from any source, whether written or verbal, that may be furnished for review are not a substitute for a party's active conduct of its own due diligence to determine these and other matters of significance to such party. Compass Commercial - San Francisco & Los Angeles will not investigate or verify any such matters or conduct due diligence for a party unless otherwise agreed in writing.

EACH PARTY SHALL CONDUCT ITS OWN INDEPENDENT INVESTIGATION AND DUE DILIGENCE.

Any party contemplating or under contract or in escrow for a transaction is urged to verify all information and to conduct their own inspections and investigations including through appropriate third party independent professionals selected by such party. All financial data should be verified by the party including by obtaining and reading applicable documents and reports and consulting appropriate independent professionals. Compass Commercial - San Francisco & Los Angeles makes no warranties and/or representations regarding the veracity, completeness, or relevance of any financial data or assumptions. Compass Commercial - San Francisco & Los Angeles does not serve as a financial advisor to any party regarding any proposed transaction. All data and assumptions regarding financial performance, including that used for financial modeling purposes, may differ from actual data or performance. Any estimates of market rents and/or projected rents that may be provided to a party do not necessarily mean that rents can be established at or increased to that level. Parties must evaluate any applicable contractual and governmental limitations as well as market conditions, vacancy factors and other issues in order to determine rents from or for the property.

Legal questions should be discussed by the party with an attorney. Tax questions should be discussed by the party with a certified public accountant or tax attorney. Title questions should be discussed by the party with a title officer or attorney. Questions regarding the condition of the property and whether the property complies with applicable governmental requirements should be discussed by the party with appropriate engineers, architects, contractors, other consultants and governmental agencies. All properties and services are marketed by Compass Commercial - San Francisco & Los Angeles in compliance with all applicable fair housing and equal opportunity laws.

**DAVIS NGUYEN** | [Davis@theDNgroupSF.com](mailto:Davis@theDNgroupSF.com) | 415.412.5703 | DRE 01509978 | [TheDNGroupSF.com](http://TheDNGroupSF.com)

**RICHARD CHANG** | [Rchang@AbcCommercialRealty.com](mailto:Rchang@AbcCommercialRealty.com) | 510.333.6198 | DRE01270736