

212 CALIFORNIA STREET  
SAN FRANCISCO CA 94111

PREMIER FINANCIAL DISTRICT OFFICE SPACE FOR LEASE



THE  GROUP



# PROPERTY DESCRIPTION

---

## 212 CALIFORNIA STREET

- ± 2,500 Square Feet
- Premier Central Financial District Location
- Close to Public Transportation
- Small Private Office Options Available
- Move-In Ready



212 California Street is a premier office space in the heart of San Francisco's bustling financial district. This stunning second-floor space boasts approximately 2,500 square feet of beautifully designed and highly functional workspace, perfect for teams of all sizes.

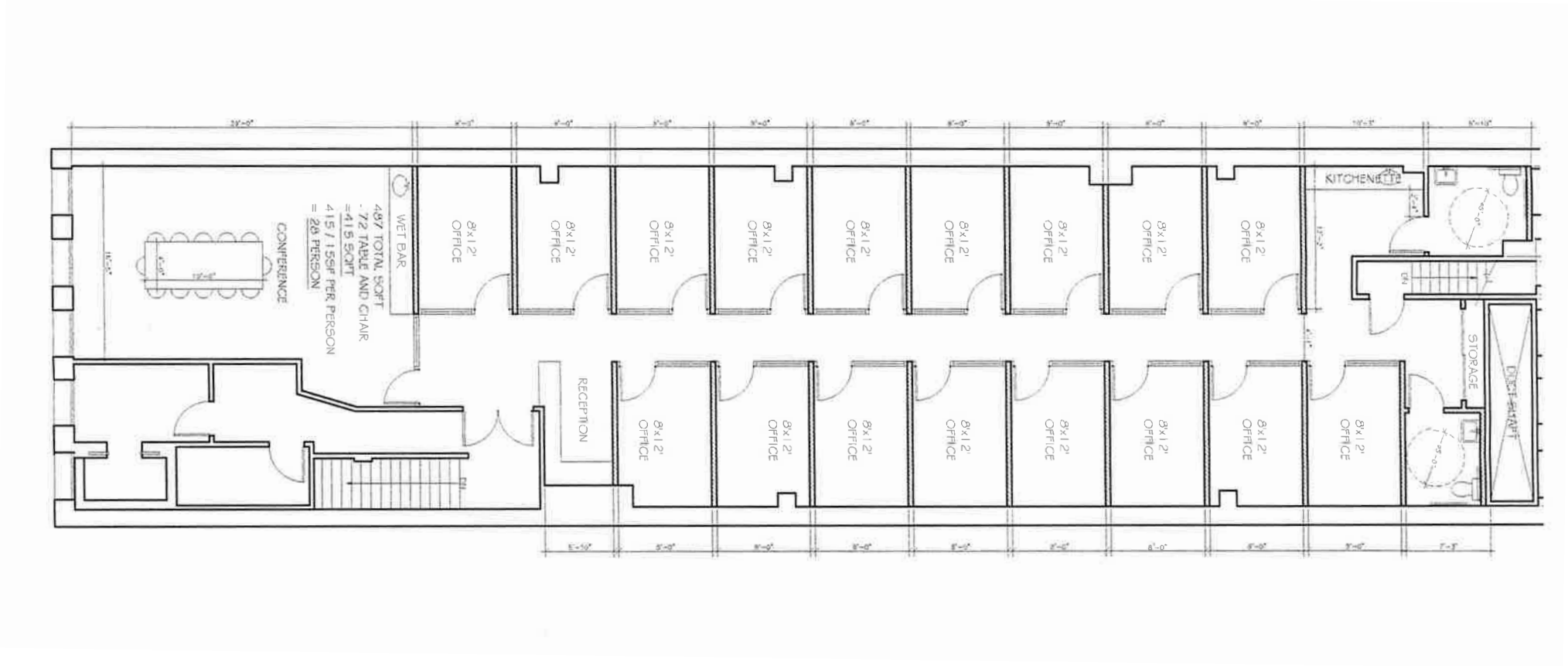
Upon entering the space, you'll be greeted by a bright and inviting reception area that leads to several private offices.

The space is designed with modern finishes, including sleek flooring, high ceilings, and large windows. The well-designed layout allows for maximum efficiency and flexibility, enabling teams to customize their workspaces to meet their unique needs.

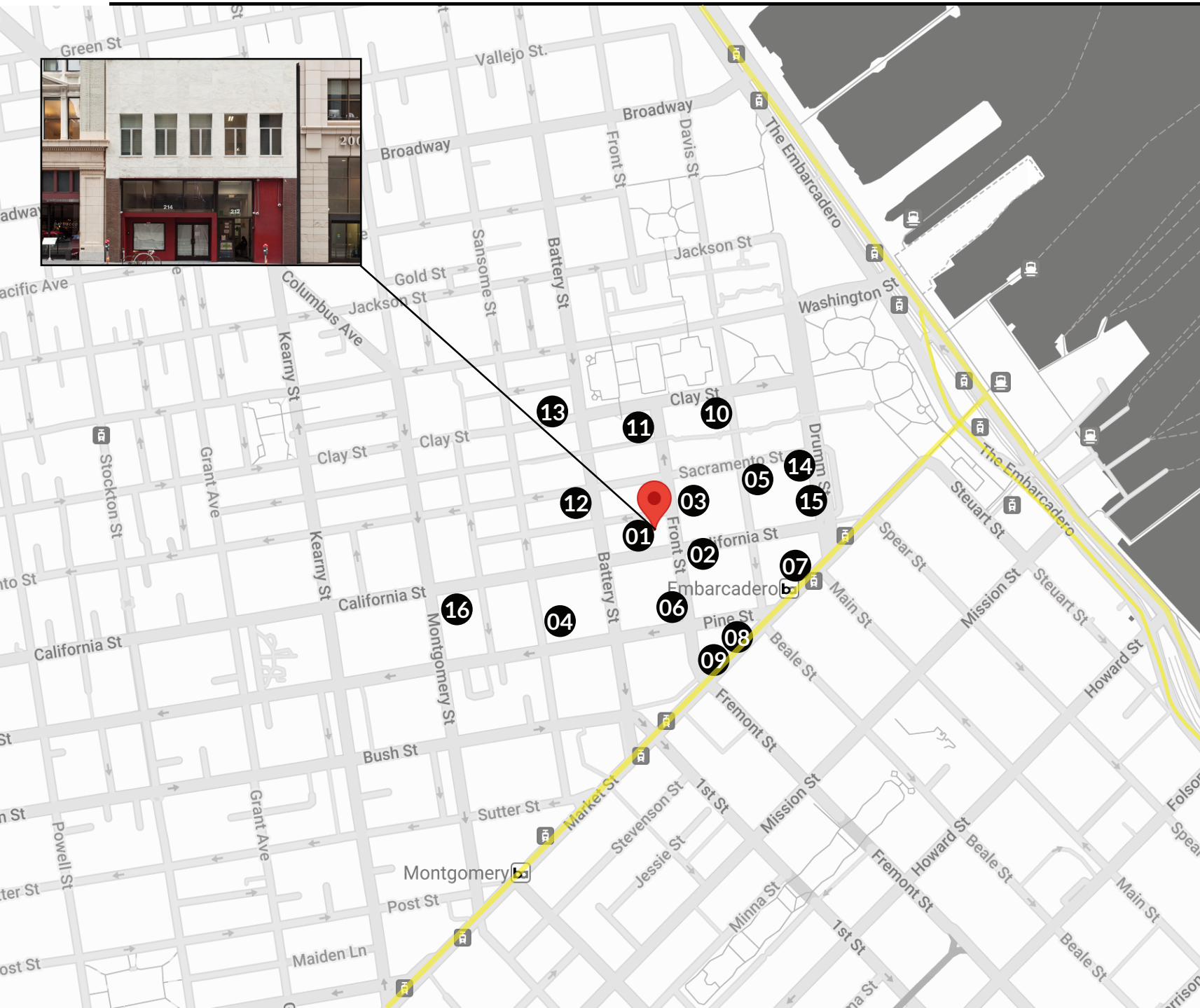
The private offices are perfect for those who value privacy and focus, and the communal areas, including a comfortable break room, provide opportunities for collaboration and team building. This office space is conveniently located in the heart of San Francisco's financial district, making it an ideal location for companies of all industries. It is easily accessible by public transportation, including BART and Muni, and is surrounded by a multitude of cafes, restaurants, and shops.

This space is perfect for startups, small businesses, or growing teams looking to elevate their business to the next level. Don't miss out on this fantastic opportunity to work in one of the most desirable locations in San Francisco. Contact us today to schedule a tour and experience this exceptional space for yourself!

# FLOOR PLAN



# LOCATION MAP

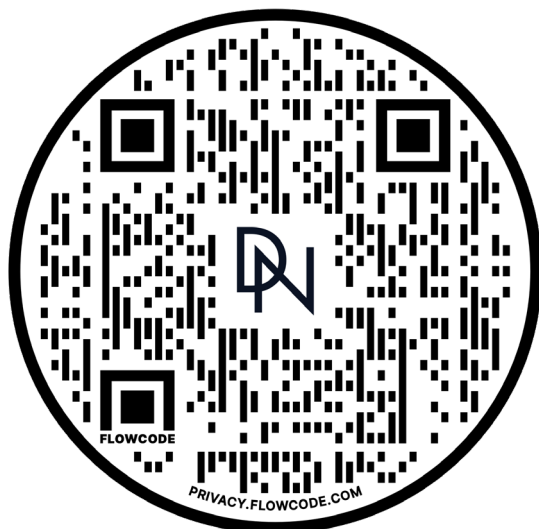


## LOCATION MAP

- 1) Tadich Grill
- 2) PABU Izakaya
- 3) Schroeder's
- 4) Four Seasons Hotel
- 5) Chipotle Mexican Grill
- 6) Lou's Cafe
- 7) Embarcadero BART Station
- 8) Miss Tomato Sandwich Shop
- 9) Starbucks
- 10) Blue Hawaii Acai Cafe
- 11) Gambino's NY Subs
- 12) Ladle & Leaf
- 13) Fish & Farm Restaurant
- 14) Oasis Grill
- 15) Ziggy's Burgers
- 16) Mendocino Farms



## COMPASS COMMERCIAL



Visit [www.TheDNgroupSF.com](http://www.TheDNgroupSF.com)  
or scan the QR code for more information.

### DAVIS NGUYEN

Davis@theDNgroupSF.com

415.412.5703

DRE 01509978

### CONFIDENTIALITY & DISCLOSURE

Compass is a real estate broker licensed by the State of California and abides by Equal Housing Opportunity laws. License Number 01991628, 01527235, 1527365. All material presented herein is intended for informational purposes only and is compiled from sources deemed reliable but has not been verified. Changes in price, condition, sale or withdrawal may be made without notice. No statement is made as to the accuracy of any description. All measurements and square footage are approximate.