

1550 STEINER STREET
SAN FRANCISCO CA 94115

±8,668 SQFT RETAIL BUILDING FOR LEASE



THE  GROUP

PROPERTY DESCRIPTION

1550 STEINER STREET

- Lease Rate: Negotiable
- ±8,668 Square Feet
- Zoning: NCT-Fillmore
- Open Floor Plan
- ADA Accessible
- Four Restrooms
- Full Kitchen
- Mix of Private Offices



This ±8,668 square foot retail space in the Fillmore district of San Francisco is a prime opportunity for businesses looking to establish a presence in one of the city's most vibrant and sought-after neighborhoods. The space is available for both sale and lease, providing flexibility for businesses of all sizes and budgets.

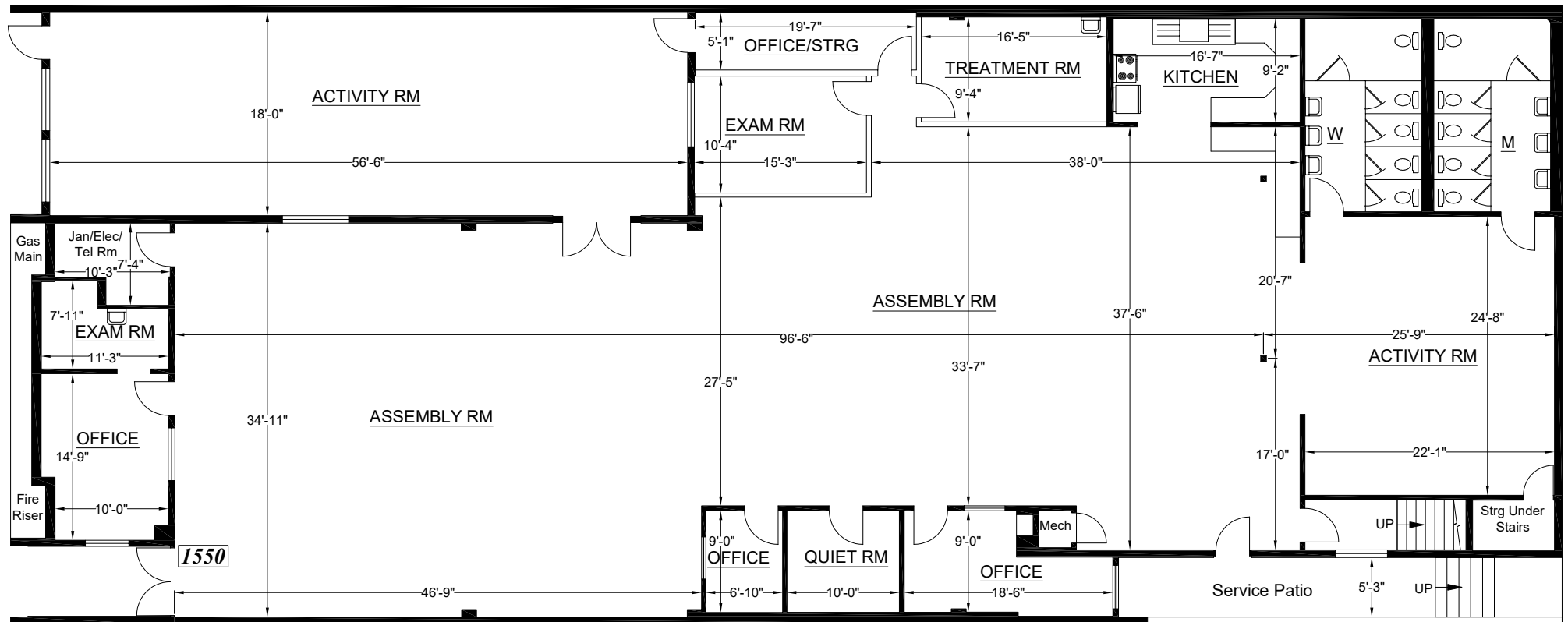
The property boasts an impressive street-level presence, with expansive windows that offer plenty of natural light and excellent visibility for showcasing products and attracting foot traffic. The interior is spacious and open, providing ample room for retail displays, merchandise, and customer traffic flow.

Located in the heart of the Fillmore district, this retail space is surrounded by a diverse mix of residential and commercial properties, including popular restaurants, boutiques, and entertainment venues. The area is known for its rich cultural history, and its many community events draw visitors from all over the city and beyond.

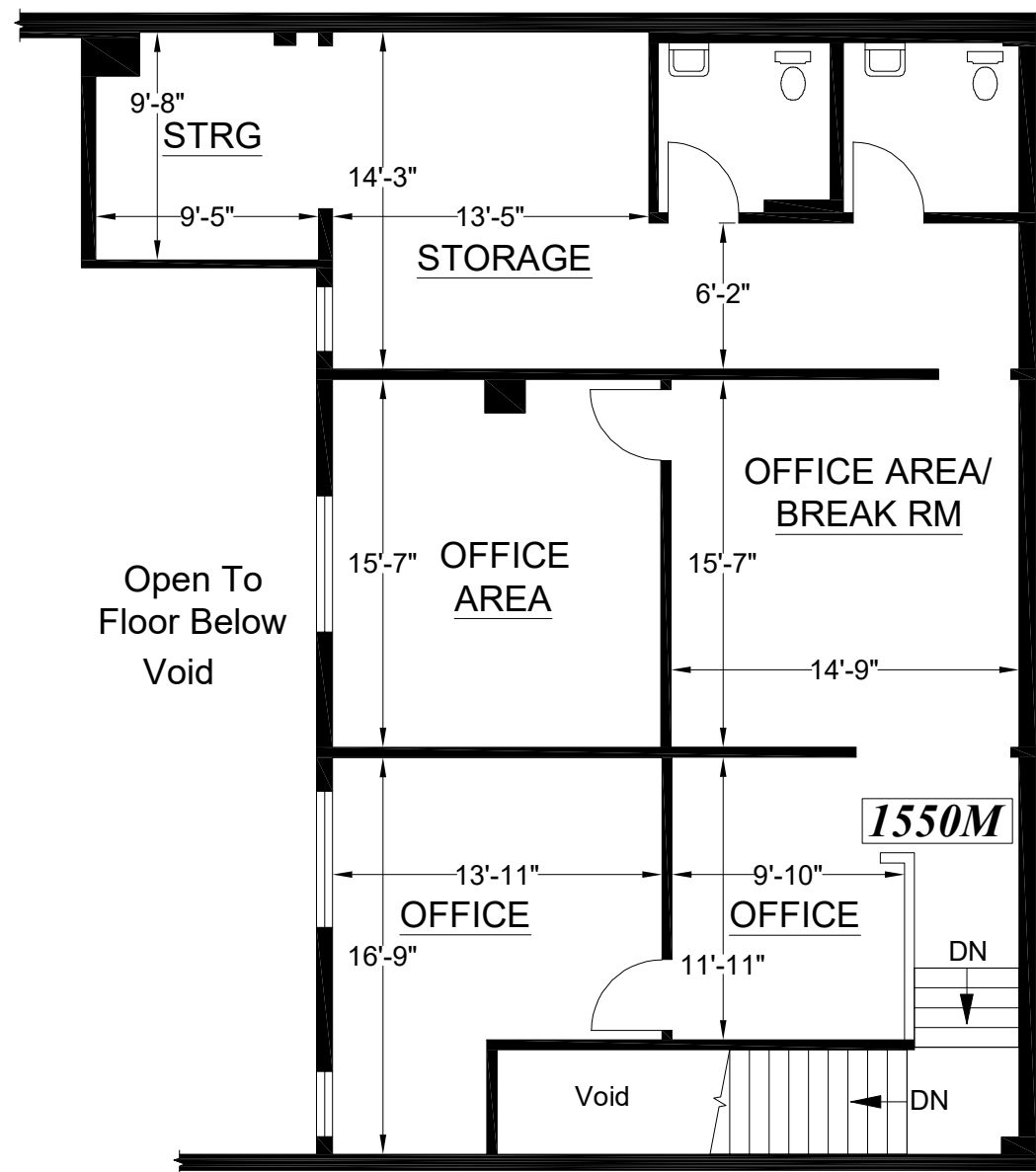
In addition to its prime location and ample space, this retail property offers a range of modern amenities designed to meet the needs of today's businesses. These include updated electrical and mechanical systems, high-speed internet access, and secure entry.

Overall, this 8,800 square foot retail space for sale and lease in the Fillmore district of San Francisco represents an exceptional opportunity for businesses looking to establish a foothold in one of the city's most vibrant and dynamic neighborhoods.

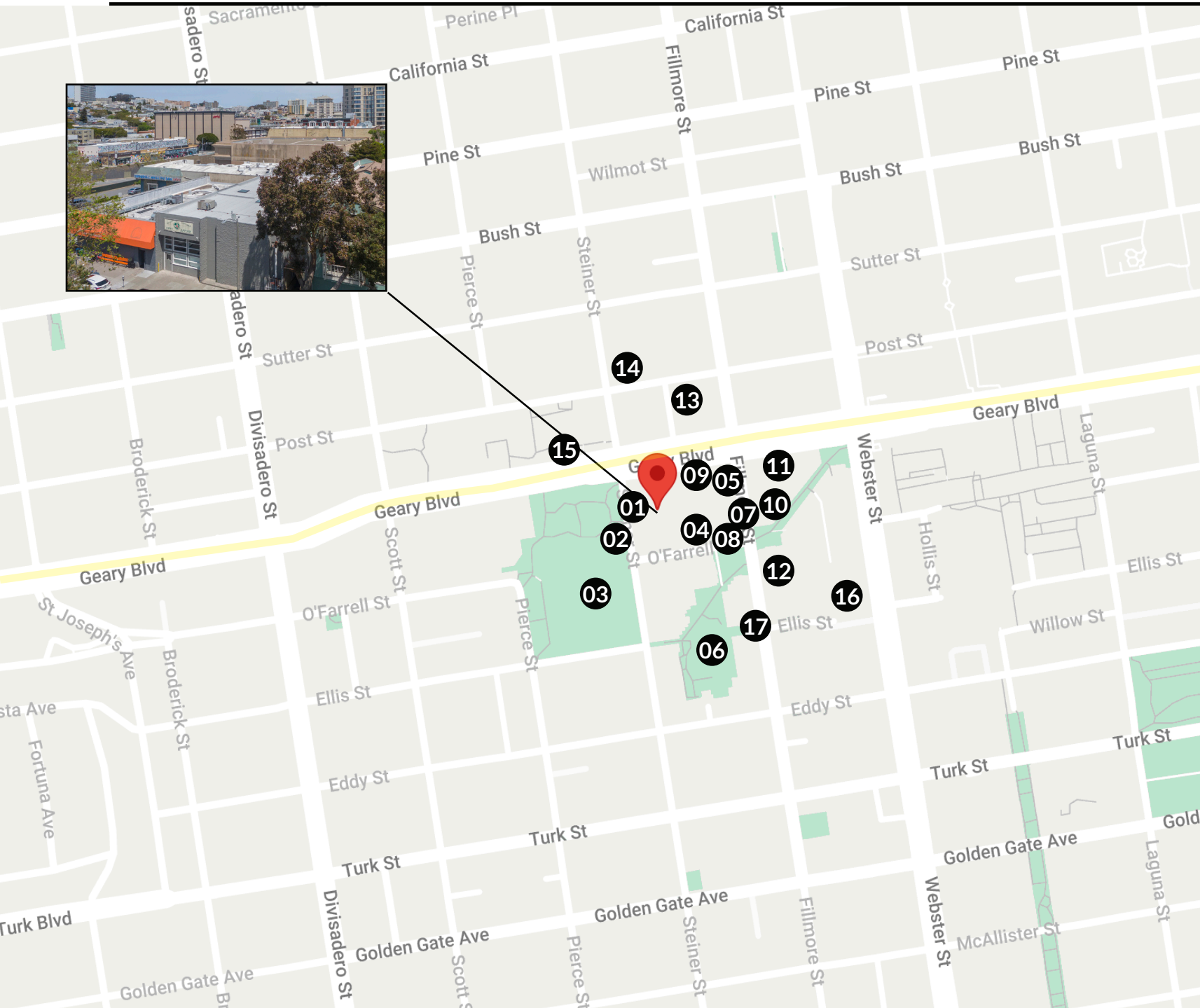
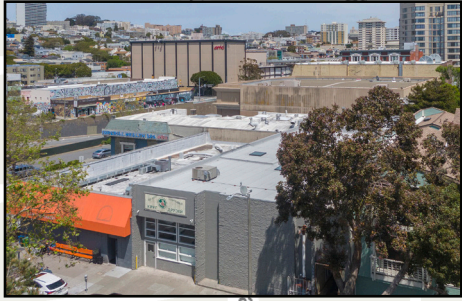
www.1550SteinerStreet.com



MEZZANINE FLOOR PLAN



LOCATION MAP



LOCATION MAP

- 1) Jane The Bakery
- 2) Turf field & park
- 3) Raymond Kimbell Playground
- 4) The Anchovy Bar
- 5) The Fillmore
- 6) Color Fountain Park
- 7) State Bird Provisions
- 8) Starbucks
- 9) USPS
- 10) Boba Guys Fillmore
- 11) The Social Study
- 12) Jai Ho Indian Grocery Store
- 13) Central Ace Hardware
- 14) Steiner Haus
- 15) Hamilton Recreation Center
- 16) Safeway
- 17) Happy Shabu Shabu

ABOUT THE NEIGHBORHOOD

WELCOME TO THE FILLMORE DISTRICT NEIGHBORHOOD

The Fillmore District is located in the heart of San Francisco, bordered by Pacific Heights to the north, Japantown to the west, Hayes Valley to the east, and the Lower Haight to the south. The neighborhood has a rich history, and is known for its vibrant music scene, diverse culture, and eclectic mix of shops and restaurants.

The Fillmore District is home to a variety of cultural landmarks, including the Fillmore Auditorium, which played a pivotal role in the development of the city's music scene in the 1960s. The area is also known for its historic jazz clubs, which hosted legendary musicians such as Duke Ellington and Billie Holiday.

In recent years, the Fillmore District has undergone a renaissance, with a surge in new restaurants, bars, and shops. The neighborhood is now home to some of the city's most popular dining destinations, ranging from classic soul food to modern fusion cuisine. There are also many independent boutiques and specialty stores that offer unique shopping experiences, from vintage clothing to artisanal crafts.



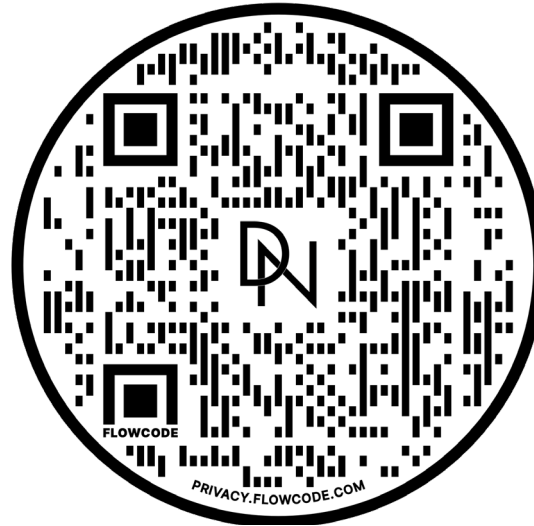
1550 STEINER STREET PHOTOS



1550 STEINER STREET PHOTOS



COMPASS COMMERCIAL



Visit www.1550SteinerStreet.com
or scan the QR code for more information.

DAVIS NGUYEN

Davis@theDNgroupSF.com

415.412.5703

DRE 01509978

CONFIDENTIALITY & DISCLOSURE

Compass is a real estate broker licensed by the State of California and abides by Equal Housing Opportunity laws. License Number 01991628, 01527235, 1527365. All material presented herein is intended for informational purposes only and is compiled from sources deemed reliable but has not been verified. Changes in price, condition, sale or withdrawal may be made without notice. No statement is made as to the accuracy of any description. All measurements and square footage are approximate.